



Steel
Container
Systems INC.

ROCK BOX DUMP BODY ROLL OFF CONTAINER



STANDARD FEATURES

CWB Certified Welding

Our CWB certified welders & welding procedures guarantee exceptional weld quality. Eliminate breakdowns and reduce the overall life-cycle maintenance costs.

Manufactured Above Industry Standard

SCS manufacturers all dump body containers above industry standards! SCS bins have additional wall studs and cross member spacing, to create a stronger more durable container.

I-Beam Cross Members

For added strength and durability we have added 4" I-Beam cross members on 18" centers. SCS Rock Box Dump Bodies can withstand the world's toughest job applications.

Heavy Duty Studs

For maximum strength and durability we have added heavy duty studs on 18" centers. SCS Rock Box Dump Bodies will perform exceptionally well in all types of rugged environments.

PRODUCT HIGHLIGHTS

- 7.7 - 16.6 cubic yards
- 14' – 20' lengths



SCS CONTAINERS HAVE AN INDUSTRY LEADING 3-YEAR PARTS AND LABOUR WARRANTY

SPECIFICATIONS

- Hook Lift Main rails 6" x 2" x 1/4" steel tube
- Cable Pull Main rails 6" x 2" x 3/16" steel tube
- Cross members 4" Junior I-Beam on 18" centers
- Vertical studs 3" x 3" x .120" formed Hi-tensile channel on 18" centers
- Door frame 4" x 3" x 3/16" steel tube on edge
- Walls, door and front sheet 10 GA hot rolled sheet
- 60" front cab guard (10 GA formed steel)
- Interior and exterior floor to wall support plates, .120" Hi tensile sheet
- Floor 1/4" steel plate
- Rear post – formed 3/16" with slanted dump gate
- Front rail 4" x 3" x 3/16" steel tube
- Side rails 4" x 3" x 3/16" steel tube
- Landing gear (wheel mount) 6" x 4" x 1/4" steel tube
- Hinges – Heavy duty with grease fitting
- ANSI 245.30-2008 Compliant Latch
- Front tail gate release latch
- Wheels – 5" standard pipe with 1-1/4" extra heavy pipe hubs and 1-3/16" cold rolled shaft
- All wheels have full length hubs for axle support and mount to the landing gear cross member with 3/8" formed steel plate
- Welding – Inner and outer floor seams, front and rear wall seams and inside top rail seams are continuous welds
- Two coats of anticorrosive primer on all exterior surfaces
- Two coats of industrial enamel paint in any single colour

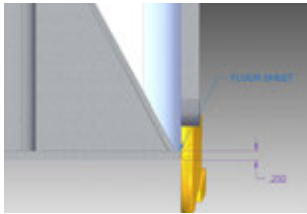
SCS bins are manufactured above industry standard. Reduce your maintenance costs & maximize uptime.

STANDARD FEATURES



Dump Body Cab Guard

To ensure the safety of your driver and truck, SCS provides a heavy duty cab guard on every dump body we manufacture.



1/4" Floor Sheet

SCS rock box dump body containers feature a heavy duty floor which allows for hauling small excavators, tractors, rock, gravel or concrete.



Tapered Side Boards

Dump body tapered side boards can provide you with extra capacity if needed. The boards can easily be replaced if they become worn.



Dump Body Slanted Tailgate

Our dump body tailgate has a fixed hinge on the top rail which allows for easy dumping and spreading of loaded materials.

TOLL FREE: 1 (877) 727-7833 | EMAIL: SALES@SCSINC.CA
FOR MORE PRODUCT INFORMATION VISIT SCSINC.CA



Steel Container
Systems INC.