



MANUFACTURING INC

# PREMIUM STUD WALL ROLL OFF CONTAINER



## STANDARD FEATURES

### CWB Certified Welding

Our CWB certified welders & welding procedures guarantee exceptional weld quality. Eliminate breakdowns and reduce the overall life-cycle maintenance costs.

### Manufactured Above Industry Standard

SCS manufacturers all stud wall roll off bins above industry standards! SCS bins have additional wall studs and cross member spacing, to create a stronger more durable container.

### Multiple Latch Designs

SCS Stud Wall Roll Off Containers have 3 door latch designs to choose from. Each application is unique, get a latch to suit your jobs exact needs.

### SCS Drop Forged Hinges

Heavy duty drop forged cast steel door hinges with grease fitting ensures an easy open door.

## PRODUCT HIGHLIGHTS

- 12 – 58 cubic yard sizes
- 10' – 24' lengths



**SCS CONTAINERS HAVE AN INDUSTRY LEADING 3-YEAR PARTS AND LABOUR WARRANTY**

## SPECIFICATIONS

- Hook Lift Main rails 6" x 2" x 1/4" steel tube
- Cable Pull Main rails 6" x 2" x 3/16" steel tube
- Cross members 3" x 3" x .120" formed Hi-tensile channel on 18" centers
- Vertical studs 3" x 3" x .120" formed Hi-tensile channel on 36" centers
- Door frame 4" x 3" x 3/16" formed Hi-tensile channel.
- Walls, door and front sheet, 10 GA Hot rolled sheet
- Interior and exterior floor to wall support plates, .120" Hi tensile sheet
- Floor 3/16" steel plate
- Rear post - Formed 3/16" Hi tensile channel
- Front rail 4" x 3" x 3/16" steel tube. 4" x 4" x .250" steel tube on containers over 20' long
- Side rails 4" x 3" x 3/16" steel tube. 4" x 4" x .250" steel tube on containers over 20' long
- Landing gear (wheel mount) 6" x 3" x 3/16" steel tube
- Hinges – Heavy duty dropped forged with grease fitting.
- ANSI 245.30-2008 Compliant Latch  
Carnegie Latch or Turn Buckle Ratchet Latch
- Wheels  
5" standard pipe with 1-1/4" extra heavy pipe hubs and 1-3/16" cold rolled shaft  
All wheels have full length hubs for axle support and mount to the landing gear cross member with 3/8" formed steel plate
- Welding  
Inner and outer floor seams, front and rear wall seams and inside top rail seams are continuous welds
- Painting  
Two coats of anticorrosive primer on all exterior surfaces  
Two coats of industrial enamel paint in any single color

SCS bins are manufactured to the highest quality standards. This reduces maintenance costs & increases productivity.

## AVAILABLE OPTIONS



### 10 Gauge Steel

Increase the strength and durability of your bin with 10 gauge steel or a 3/16" wall, front & door sheet.



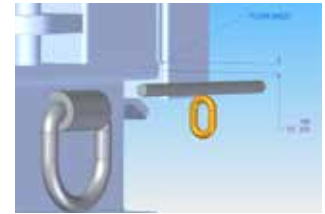
### Custom Structural Spacing

Every job application is unique! That's why we offer specific cross member & wall stud spacing as per your requirements.



### Dual Purpose

SCS Roll Off Bins can fit for any under structure hook lift, cable, live roll, bail hook (Dempster) or dual purpose system.



### Heavy Duty Flooring

Increase the strength and durability of your Stud Wall with heavy duty floor options 1/4", 5/16" and 3/8" thick steel plate.

TOLL FREE: 1 (877) 727-7833 | EMAIL: SALES@SCSINC.CA  
FOR MORE PRODUCT INFORMATION VISIT [SCSINC.CA](http://SCSINC.CA)

