



MANUFACTURING INC

ROCK BOX ROLL OFF CONTAINER



STANDARD FEATURES

CWB Certified Welding

Our CWB certified welders & welding procedures guarantee exceptional weld quality. Eliminate breakdowns and reduce the overall life-cycle maintenance costs.

Manufactured Above Industry Standard

SCS manufacturers all stud wall roll off bins above industry standards! SCS bins have additional wall studs and cross member spacing, to create a stronger more durable container.

1/4" Floor Sheet

SCS rock box roll off containers feature a heavy duty floor which allows for hauling small excavators, tractors, rock, gravel or concrete.

SCS Drop Forged Hinges

Heavy duty drop forged cast steel door hinges with grease fitting ensures an easy open door.

PRODUCT HIGHLIGHTS

- 5 – 27 cubic yard sizes
- 12' – 25' lengths



SCS CONTAINERS HAVE AN INDUSTRY LEADING 3-YEAR PARTS AND LABOR WARRANTY

SPECIFICATIONS

- Hook Lift Main rails 6" x 2" x 1/4" steel tube
- Cable Pull Main rails 6" x 2" x 3/16" steel tube
- Cross members 3" x 3" x .120" formed Hi-tensile channel on 18" centers
- Vertical studs 3" x 3" x .120" formed Hi-tensile channel on 18" centers
- Door frame 4" x 3" x 3/16" steel tube
- Walls, door and front sheet, 10 GA Hot rolled sheet
- Interior and exterior floor to wall support plates, .120" Hi tensile sheet
- Floor 1/4" steel plate
- Rear post - Formed 3/16" Hi tensile channel
- Front rail 4" x 3" x 1/16" steel tube. 4" x 4" x .250" steel tube on containers over 20' long
- Side rails 4" x 3" x 1/16" steel tube. 4" x 4" x .250" steel tube on containers over 20' long
- Landing gear (wheel mount) 6" x 3" x 3/16" steel tube
- Hinges – Heavy duty dropped forged with grease fitting.
- ANSI 245.30-2008 Compliant Latch
Carnegie Latch or Turn Buckle Ratchet Latch
- Wheels
5" standard pipe with 1-1/4" extra heavy pipe hubs and 1-3/16" cold rolled shaft
All wheels have full length hubs for axle support and mount to the landing gear cross member with 3/8" formed steel plate
- Welding
Inner and outer floor seams, front and rear wall seams and inside top rail seams are continuous welds
- Painting
Two coats of anticorrosive primer on all exterior surfaces
Two coats of industrial enamel paint in any single color

SCS bins are manufactured to the highest quality standards. This reduces maintenance costs & increases productivity.

AVAILABLE OPTIONS

***Additional Options include Dual Purpose Systems and Narrower Widths For Nesting**



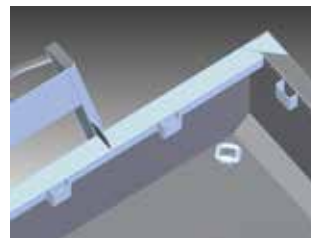
Rock Box Cab Guard

To ensure the safety of your driver and truck, SCS offers an optional heavy duty cab guard for Rock Box Containers.



Dump Style Tailgate

SCS rock box roll offs are available with a dump style tailgate which provides you with versatility to adapt to changing job requirements.



D-Ring Tie Downs

Tailor the bin to your specific application! We offer a heavy duty D-ring tie downs installed to your specification.



3/16" Sheet Wall Upgrade

Increase the strength and durability of your Rock Box with an optional heavy duty 3/16" sheet wall upgrade.

TOLL FREE: 1 (877) 727-7833 | EMAIL: SALES@SCSINC.CA
FOR MORE PRODUCT INFORMATION VISIT SCSINC.CA



MANUFACTURING INC